

STANDARD EQUIPMENT

ELECTRICAL SYSTEM Alternator, 55A Back up Alarm Batteries 2X 12V, 120Ah Gauge - Coolent temp - Fuel level - Brake Air pressure - TM temp. - TM oil pressure - Hour meter & volt meter Indication lamp - Parking - Charge - Brake low pressure - Engine oil pressure - High beam Light - 1 LED dome Light - 4 Work Light (2 Front, 2 Rear) - 2 Head light with high and low beam - 4 Turn signal - 2 Stop light Switch - Ignition Key, Start Stop Switch	 - Battery master switch - Harzard - Beacon - Work lamp Starter CAB Cigar lighter Coat hook Automatic temperature control - heater - defroster - Wiper and washer, front Personal storage space: holder, can and cup Rear view mirrors(1 inside) Rear view mirrors(2 outside) 2" seat belt & adjustable suspension seat with armrests Steering wheel with knob Sun visor(front window) Tinted safety glass Cabin with two doors Pedals - one accelerator pedal - one brake pedal Rubber floor mat	ENGINE Antifreeze Low Emission, Tier 2 SL760 : Engine - Weichai WD10G220E21 SL730 : Engine - Yuchai YC6J125Z-T20 Engine fuel priming pump(SL760) Fan guard Fuel/water separator Fuel warmer(SL760) Precleaner, engine air intake Radiator (de-aeration type) POWER TRAIN Brake : Service, caliper disc Parking brake Differential, conventional Torgue converter Power shift transmission Transmission oil cooler Tire (23.5-25, 16PR, L3) HYDRAULICS Diagnostic pressure taps Hydraulic oil taps Hydraulic oil cooler(SL760)	Hydraulic system - 2 spool, mechanical control for boom and bucket atuation Steering, load-sensing OTHERS Articulation locking bar Counterweight Drawbar with pin Ergonomically located and slip resistant, left & right - Handrails - Ladders - Platforms - Steps Front Fenders Hydraulic oil level sight gauge Lift and tie-down hooks Loader linkage, sealed Z-bar design Cushioned steering stops
--	---	--	--

OPTIONAL EQUIPMENT

Cab, ROPS (ISO3471) / FOPS (ISO3449) (sound suppressed and pressurized) with : Cavin L/H door sliding window Climate control : -Air conditioning only Heater & air conditioning Beacon light Fire extinguisher High lift boom	MP3 Radio Seat -2" seat belt & adjustable suspension seat with headrest Wheel chock	SL760 Bucket - 2.6 m³ HD Weld-on teeth - 2.7 m³ GP bolt-on teeth - 2.8 m³ GP bolt-on cutting edge - 2.8 m³ Rock (Spade nose) - 3.1 m³ GP bolt-on cutting edge - 3.2 m³ GP bolt-on teeth - 3.3 m³ GP bolt-on cutting edge - 4.0 m³ Coal handling	SL730 Bucket - 1.5 m³ GP bolt-on teeth - 1.6 m³ GP bolt-on cutting edge - 1.8 m³ GP bolt-on cutting edge - 2.2 m³ Coal handling
--	---	---	---

* Specifications and designs are subject to change without advance notice.

PLEASE CONTACT

Distributed by :

 **HYUNDAI**
HEAVY INDUSTRIES CO.,LTD.

HYUNDAI HEAVY INDUSTRIES. CO., LTD.
1000 BANGEOJINSUNHWAN-DORO, DONG-GU, ULSAN, 682-792, KOREA
TEL: (82)52-202-7722, 9807 FAX: (82)52-202-7720

Manufactured and
Assembled by :

 **HYUNDAI**
SHANDONG HEAVY INDUSTRY

HYUNDAI(SHANDONG) HEAVY INDUSTRY MACHINERY CO., LTD.
YITIANMEN DAJIE ZHONGDUAN, TAIAN, SHANDONG
THE PEOPLE'S REPUBLIC OF CHINA
TEL: (86)538-692-8989, FAX : (86)538-692-8991


9 9 9 0 0 9 - 5 0 1 0 2 0



*Photo may include optional equipment.

Hyundai Shandong(HSD) Wheel Loader Opens Up the Future

SL760/730

Excellent durability saves your costs of working.
Outstanding power greatly enhances your productivity.



*Photo may include optional equipment.

Strong Power, High Performance

SL760/730

Hyundai Shandong Wheel Loader shows maximum power at all times and greatly improves efficiency.

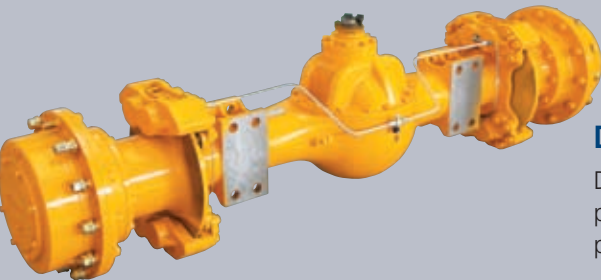


Powerful, Energy-saving and Environmentally Friendly Engine

Weichai(SL760) and Yuchai(SL730) turbocharged engine are built for maximum power, reliability, and optimum fuel efficiency. These engines meet the emission standards EPA Tier II, EU Stage II. Weichai(SL760) engine has power of 162kW, electromagnetic fan clutch and fuel transfer pump and reduces noise to make start easier and more energy save.

Reliable Transmission

Hydrodynamic transmission is made up of double turbine torque converter (SL760 only) and power assist shift planetary transmission. It can meet the wheel loader in all requirements of working situations.



Durable and Sturdy Axle

Durable and sturdy front and rear axle provides running stability, good performance in poor conditions, and maximization of the operation capability.



*Photo may include optional equipment.



Fan clutch (SL760 only)

Fan's speed is adjusted by temperature to reduce engine fuel consumption and noise. Engine durability is increased by warming up engine quickly.



Fuel Pre-filter and Fuel Heater (SL760 only)

Electric Pump quickly removes fuel in the air and improves start of the machine. Fuel heater raises fuel temperature and improves low temperature start. Moist eliminating filter filters impurities and moist, and extends engine's life and replacement cycle.

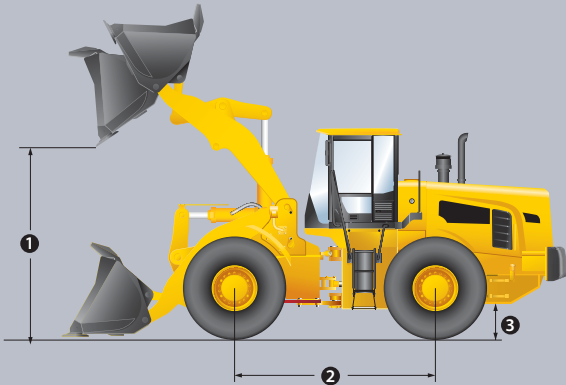


Electric Shut off (SL760 only)

When the circuit key turns to off, it stops electromagnetic and closes the throttle.

Higher Productivity

Long wheelbase makes the machine maintain longitudinal stability in a variety of operating conditions, and hinged center of the front and rear frame is placed at the center of the wheelbase, so that when the loader makes a turn, it makes wheelbase of the front and rear wheels overlap which increases tire life and operation stability. And higher fuel tank location effectively prevents fuel tanks from damaging and poses the maximum ground clearance.



1 Higher Dump Clearance (without teeth)

SL760	3,215 mm
SL730	2,925 mm

2 Longer Wheelbase

SL760	3,300 mm
SL730	2,850 mm

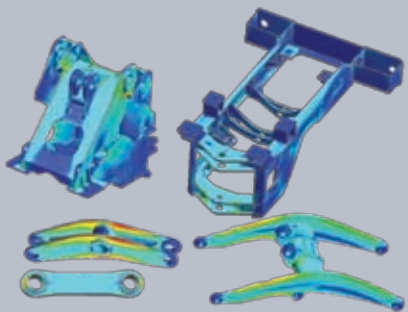
3 Higher Fuel Tank Location

SL760	565 mm
SL730	480 mm

Enhanced Reliability and Durability

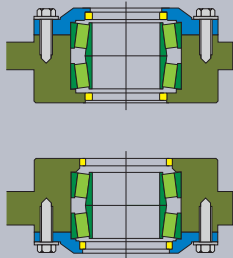
SL760/730

Product structure of limited element analysis and optimization sufficiently improved durability and safety.



Firm and Durable Structural Parts

Extend product life and ensure superior running function using product structure of limited element analysis and optimization.

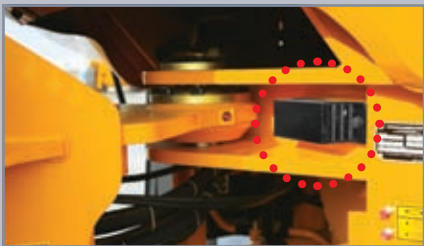


Reliable Center Pivot (SL760 only)

Double-tapered roller bearings extends equipment life, and lubrication and replacement cycle. (Comparison with joint bearings) : 100 hr → 1,000 hr

Turn Limit Cushion

3 layered rubber buffer structure enhances impact resistance, reduces operator's fatigue and extend equipment's life.



Sealed Loader Linkage

O-shaped ring seal prevents leakage and makes maintenance easier. Dust Seal extends equipment life and makes maintenance and repair efficient by blocking dust and preventing grease leakage.



Enhanced Cooling System

Aluminum bar-plate type, large capacity radiator and coolers significantly improve thermal shock, impulse and vibration resistance and increase durability.



Brake Disc Protector

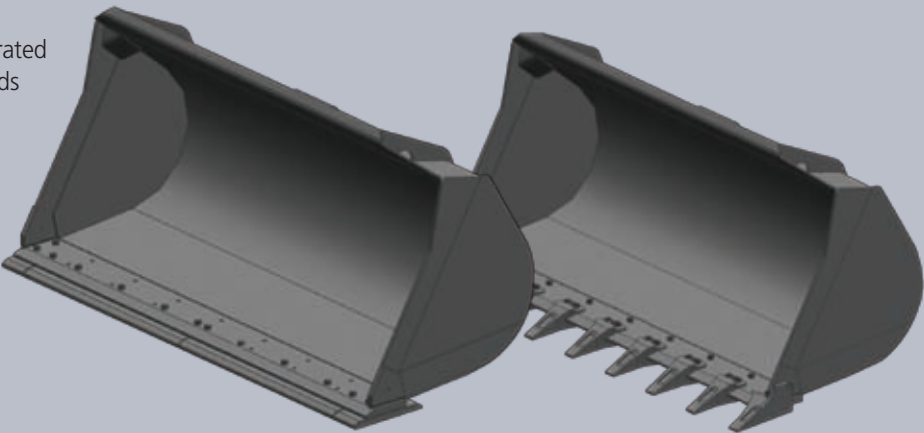
Front axle enhances protection of brake disc shield from smashing of heavy objects.



*Photo may include optional equipment.

Bucket

High-alloy steel casting and wear-proof integrated cutting edge and teeth are suitable for all kinds of working environment.



Operator Friendly Designed Cab

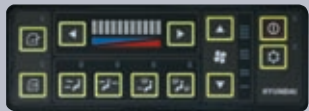
SL760/730

Quiet and spacious interior room provides operators with a comfortable operating environment. All kinds of metering instruments are effectively laid out to improve convenience of operation.



Spacious Cab with Excellent View

Spacious cab designed with ergonomics approach boasts low noise and excellent view, arc shaped front window, large rear window and side windows offer wide view in all directions.



Large Capacity Air Conditioning and Convenient Control (Option)

Large capacity, air circulation and perfect defrost system make the space comfortable for operators and membrane button is easy to operate.



Radio with USB interface (Option)

Radio with USB interface offers better sound for operators and makes operation more enjoyable.



Excellent Air Circulation System

Excellent air conditioning and circulation system provide operators with more comfortable working space.



Storage Spaces with Multiple Functions



*Photo may include optional equipment.



Suspended Seat

It can be adjusted to the position optimized for driver's weight and size reducing operator's fatigue.



Centralized Monitoring Panel

Centralized monitoring panel designed with simplicity of ergonomics that shows working conditions and warning lights at a glance.



Air Purification Filter

It effectively filters dust out of the cab to keep the air clean and fresh.



Right Side Window Holder

Operator can partially or fully open right side window when it's needed.



Large Side Mirror

Large side mirror ensures the operator's driving safety.

Simple and Efficient Maintenance System

SL760/730

Quick and easy maintenance systems improve efficiency and cost saving.
As a loader newly designed from the driver's point of view, Hyundai Shandong wheel loader makes your operation more comfortable and convenient.



Rear Engine Hood Electric Lift Control Switch

Rear engine hood is electrically opened with a large opening angle for easier maintenance.



Master switch (Option)

A master switch disconnects the battery power to protect the electrical system.



Easy Access to Engine Compartment

Highly accessible engine compartment assures fast and easy maintenance.



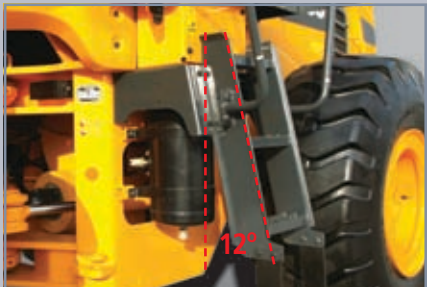
Key-Locking Fuel Cap

The location of fuel cap increased accessibility and key locking function is applied for machine protection.



Non-slip Platform

Non-slip platform and steps ensure operator's safety.



Ladder of Convenience and Safety

Tilted ladder by 12 degrees is designed to make getting on and off easier and to enhance comfortability for operators.



*Photo may include optional equipment.



Headlight and Turn Signal

Lights are beautifully and durably designed.



Counterweight and Rear Warning Light

Counterweight is beautifully designed and warning lights are noticeable.



Easy Access to Radiator

Operators can easily maintain and clean the radiator.



Easy Replacement of Air Filter

Air filter is built in the rear of the hydraulic tank to ease replacement and cleaning of the filter.



Convenient and Safe Electrical Control Box

Durable electrical control boxes are placed at side door in outside of cab and centralized to make easy maintenance for operator to check.



Oil Sight Gauge

The hydraulic oil check sight gauge is installed on the side of the hydraulic tank for the convenience of maintenance check from ground level.

Specifications & Dimensions SL 760

SL760

ENGINE

Maker/Model	Weichai / WD10G220E21	Bore x Stroke	126 mm (4.96") x 130 mm (5.12")
Type	4-cycle, water cooled, turbocharged, diesel, direct injection	Displacement	9.726 ℓ (594 cu in)
Gross power	217 HP(162 kW) / 2,200rpm	Compression ratio	17.0 : 1
Net power	206 HP(154 kW) / 2,200rpm	Air cleaner	Dry, dual elements
Maximum torque	88 kg-m(634 lb-ft) / 1,400~1,600rpm	Alternator	24V, 55 Amp
No. of cylinders	6	Battery	2 x 12V, 120 Ah.
		Starting motor	24V, 8.1 kW

TRANSMISSION

Torque converter type	4-elements, Double-turbine	Travel speed	km/h (mph)
Tire	23.5-25, L3	Forward	1st10.8 (6.7)
			2nd38.5 (23.9)
		Reverse	1st14.8 (9.2)

AXLES

Drive system	Four-wheel drive system	Hub reduction	Planetary reduction at wheel end
		Differential	Conventional
		Reduction ratio	26.11

HYDRAULIC SYSTEM

Type	Open-Centered, tandem circuit system (Bucket, Boom)
Pump	Gear type, 332 ℓpm
System pressure	190 kgf/cm² (2,702 psi)

Bucket Controls	Type	Manual operated lift and tilt circuit
	Lift Circuit	The valve has four functions ; raise, hold, lower and float
	Tilt Circuit	The valve has three functions ; tilt back, hold and dump
Cylinder		Lift 160 mm(6.3 ") x 820 mm(32.3 ") Tilt 180 mm(7.1 ") x 545 mm(21.5 ")
Cycle Time		Raise : 5.8 sec (with load) Dump : 1.1 sec Lower : 3.7 sec Total : 10.6 sec

BRAKES

Service Brakes	- Air over hydraulic brake system (Caliper disc type) - Independent axle-by-axle system
Parking Brake	Manual pneumatic controlled drum brake on transmission

STEERING SYSTEM

Type	Hydraulic power steering
Pump	Gear type, 151 liters/min (39.9 gal/min)
Relief Valve Setting	160 kg/cm²(2,275 psi)
Cylinder (Bore x Stroke)	90 mm(3.5") x 440 mm(17.3")
Steering Angle	40° (each direction)

SERVICE REFILL CAPACITIES

Fuel tank	280 liters (74.0 USgal)	Front axle	28 liters (7.4 USgal)
Cooling system	44 liters (11.6 USgal)	Rear axle	28 liters (7.4 USgal)
Crankcase	20 liters (5.3 USgal)	Hydraulic tank	150 liters (39.6 USgal)
Transmission	50 liters (13.2 USgal)	Hydraulic system (including tank)	260 liters (68.7 USgal)

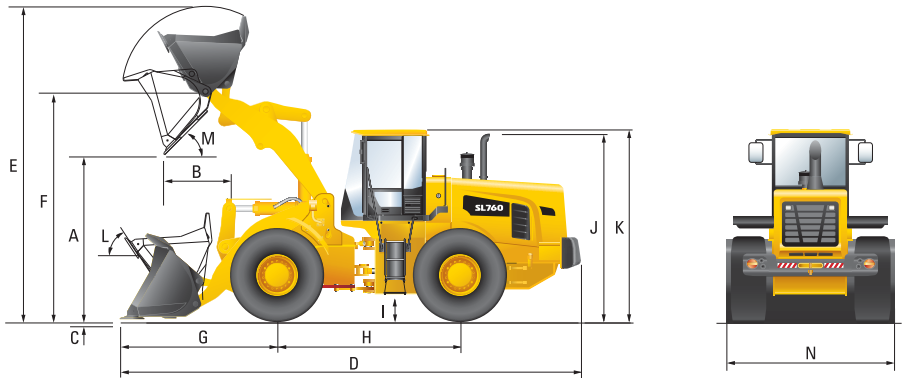
OVERVIEW

Description	UNIT	SL760
Operating weight	kg (lb)	17,200 (37,920)
Bucket capacity	Heaped m³(yd³)	3.0 (3.9)
	Struck m³(yd³)	2.6 (3.4)
Breakout force-bucket	kg (lb)	17,810 (39,260)
Tipping load	Straight kg (lb)	13,630 (30,050)
	Full turn kg (lb)	11,800 (26,010)

TIRES

Type	Tube type, loader design tires
Standard	23.5-25, 16 PR, L3

DIMENSIONS



Description	UNIT	SL760
Bucket Type		General purpose bolt-on teeth
A. Dumping clearance at max. height and 45° dump angle.	mm (ft-in)	3,015 (9' 11")
B. Reach	Full lift mm (ft-in)	1,120 (3' 8")
	7ft height mm (ft-in)	1,780 (5' 10")
C. Digging depth	mm (in)	65 (2.6")
D. Overall length	on ground mm (ft-in)	8,150 (26' 9")
	at carry mm (ft-in)	8,000 (26' 3")
E. Overall height (fully raised)	mm (ft-in)	5,660 (18' 7")
F. Bucket pivot max. height	mm (ft-in)	4,220 (13' 10")

Description	UNIT	SL760
G. Front overhang	mm (ft-in)	2,820 (9' 3")
H. Wheelbase	mm (ft-in)	3,300 (10' 10")
I. Ground clearance	mm (ft-in)	430 (1' 5")
J. Height over exhaust	mm (ft-in)	3,200 (10' 6")
K. Height over cab	mm (ft-in)	3,480 (11' 5")
L. Roll-back angle	on ground deg	41
	at carry deg	47
M. Dump angle	deg	45
Clearance circle	mm (ft-in)	13,240 (43' 5")
N. Overall width	with bucket mm (ft-in)	2,950 (9' 8")
	without bucket mm (ft-in)	2,770 (9' 1")

Specifications & Dimensions SL 730

SL730

ENGINE

Maker/Model	Yuchai / YC6J125Z-T20	Bore x Stroke	105 mm (4.13") x 125 mm (4.92")
Type	4-cycle, water cooled, turbocharged, diesel, direct injection	Displacement	6.494 ℓ (396 cu in)
Gross power	123 HP(92 kW) / 2,200rpm	Compression ratio	17.5 : 1
Net power	117 HP(87 kW) / 2,200rpm	Air cleaner	Dry, dual elements
Maximum torque	51 kg-m(369 lb-ft) / 1,400~1,600rpm	Alternator	24V, 55 Amp
No. of cylinders	6	Battery	2 x 12V, 120 Ah.
		Starting motor	24V, 6 kW

TRANSMISSION

Torque converter type	3-elements, Single-turbine	Travel speed	km/h (mph)
Tire	17.5-25, L3	Forward	1st7.4 (4.6)
			2nd13.3 (8.3)
			3rd23.9 (14.6)
			4th39.5 (24.5)
		Reverse	1st9.2 (5.7)
			2nd29.0 (18.0)

AXLES

Drive system	Four-wheel drive system	Hub reduction	Planetary reduction at wheel end
		Differential	Conventional
		Reduction ratio	20.26

HYDRAULIC SYSTEM

Type	Open-Centered, tandem circuit system (Bucket, Boom)	Bucket Controls	Type	Manual operated lift and tilt circuit
Pump	Gear type, 169 ℓpm		Lift Circuit	The valve has four functions ; raise, hold, lower and float
System pressure	160 kgf/cm² (2,275 psi)		Tilt Circuit	The valve has three functions ; tilt back, hold and dump
		Cylinder		Lift 110 mm(4.3") x 785 mm(30.9") Tilt 160 mm(6.3") x 380 mm(15.0")
		Cycle Time		Raise : 5.1 sec (with load) Dump : 1.1 sec Lower : 3.0 sec Total : 9.2 sec

BRAKES

Service Brakes	- Air over hydraulic brake system (Caliper disc type) - Independent axle-by-axle system
Parking Brake	Manual controlled disc brake on transmission

STEERING SYSTEM

Type	Hydraulic power steering
Pump	Gear type, 83 liters/min (21.9 gal/min)
Relief Valve Setting	160 kg/cm²(2,275 psi)
Cylinder (Bore x Stroke)	70 mm(2.8") x 412 mm(16.2")
Steering Angle	40° (each direction)

SERVICE REFILL CAPACITIES

Fuel tank	160 liters (42.3 USgal)	Front axle	18 liters (4.8 USgal)
Cooling system	33 liters (8.7 USgal)	Rear axle	18 liters (4.8 USgal)
Crankcase	16 liters (4.2 USgal)	Hydraulic tank	95 liters (25 USgal)
Transmission	40 liters (10.6 USgal)	Hydraulic system (including tank)	155 liters (40.9 USgal)

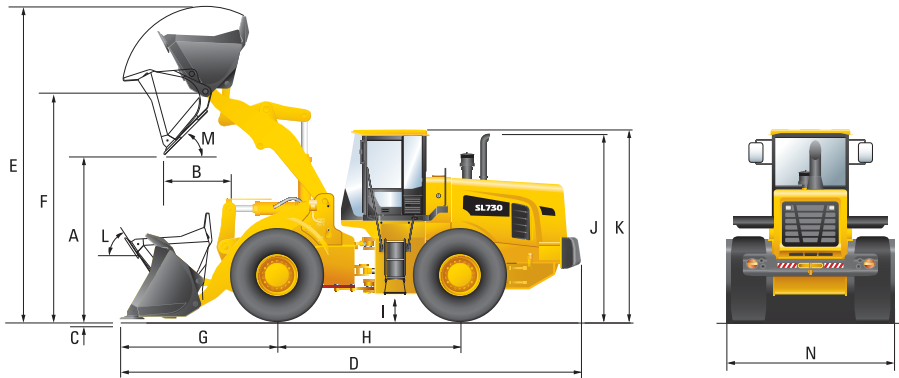
OVERVIEW

Description	UNIT	SL730
Operating weight	kg (lb)	10,200 (22,490)
Bucket capacity	Heaped	m³(yd³)1.7 (2.2)
	Struck	m³(yd³)1.4 (1.8)
Breakout force-bucket	kg (lb)	10,370 (22,860)
Tipping load	Straight	kg (lb)8,440 (18,610)
	Full turn	kg (lb)7,100 (15,650)

TIRES

Type	Tube type, loader design tires
Standard	17.5-25, 14 PR, L3

DIMENSIONS



Description	UNIT	SL730
Bucket Type		General purpose bolt-on teeth
A. Dumping clearance at max. height and 45° dump angle.	mm (ft-in)	2,790 (9' 2")
B. Reach	Full lift	mm (ft-in)1,150 (3' 9")
	7ft height	mm (ft-in)1,640 (5' 5")
C. Digging depth	mm (in)	87 (3.4")
D. Overall length	on ground	mm (ft-in)6,940 (22' 9")
	at carry	mm (ft-in)6,890 (22' 7")
E. Overall height (fully raised)	mm (ft-in)	4,880 (16')
F. Bucket pivot max. height	mm (ft-in)	3,775 (12' 5")

Description	UNIT	SL730
G. Front overhang	mm (ft-in)	2,415 (7' 11")
H. Wheelbase	mm (ft-in)	2,850 (9' 4")
I. Ground clearance	mm (ft-in)	370 (1' 3")
J. Height over exhaust	mm (ft-in)	2,760 (9' 1")
K. Height over cab	mm (ft-in)	3,235 (10' 7")
L. Roll-back angle	on ground	deg43
	at carry	deg49
M. Dump angle	deg	45
Clearance circle	mm (ft-in)	11,770 (38' 7")
N. Overall width	with bucket	mm (ft-in)2,480 (8' 2")
	without bucket	mm (ft-in)2,300 (7' 7")